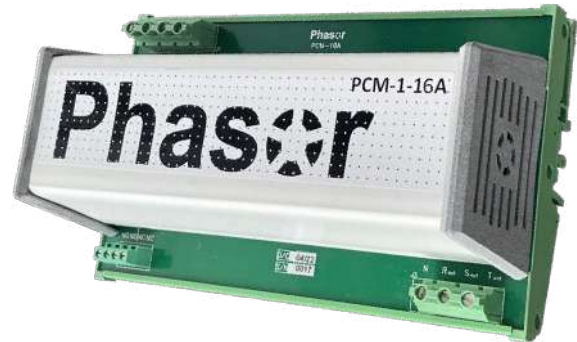


PCM-1 - PCM phase compensation module

Phasor
Revolutionizing Electrical Safety and Reliability



Description

The device is PCM (Phase Compensating Module) which can be mounted on a standard DIN rail 35 mm

any three-phase electrical distribution panel/control panel, providing power to facilities, Continue of three-phases, in the event of a phase loss, in this system, on average one-third from the device will be cut off (or two-thirds in case of double-phase loss).

When the PCM is installed, the fault is eliminated for one-phase devices automatically.

Application

The unit is designed to provide a continuous power supply to every electrical panel that we will install it.

Phase loss may occur, to prevent breakdown of equipment and capital loss and save valuable time.

How It Works

The power supply to the system goes through the PCM - in case of unexpected disconnection of any phases, for what reason, the PCM recognize

The fault immediately and within a few thousandths of a second provide power from one of the remaining phases to the one that failed (or to both), thus Provides continuity of operation for the single-phase equipment. After solving the problem, the PCM instantly and automatically reconnects the phase order to their original state, and returns the power supply to normal operation.

Note

When installed, the PCM will reliably provide power

Continuous the distribution of the three phases under a loss phase. However, proper use of the device must be taken into

In the event of a phase loss, the PCM asks for power

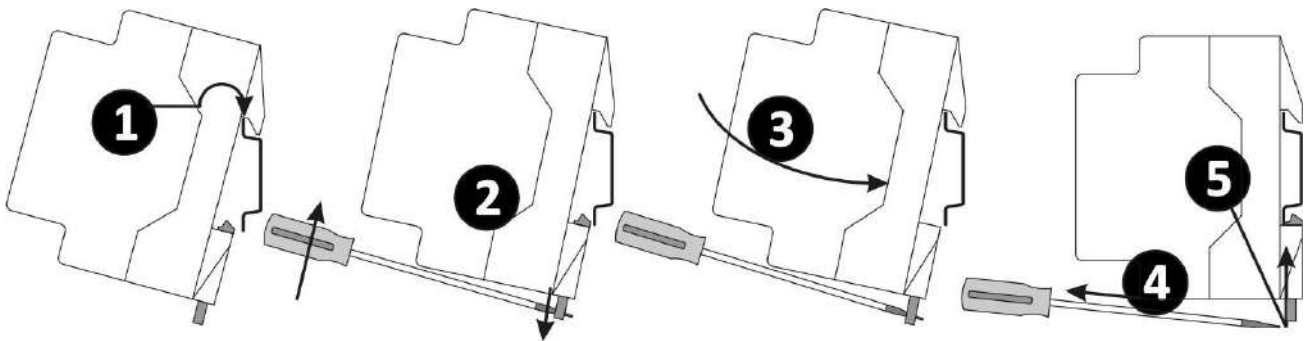
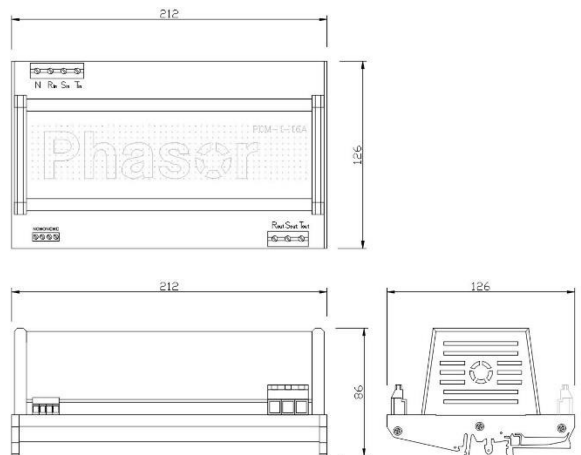
from one of the remaining phases. The borrowing phase will now trigger two.

The above data may be changed without prior notice

The PCM is intended to work only for single-phase equipment at the time of phase fault, Three-phase motors will not be affected, And they will respond the same as if PCM was not installed, and therefore not will work under a phase loss fault

Properties

- Constant monitoring
 - No maintenance
 - Immediate response - 15-30 milliseconds
 - NC/NO auxiliary connection
 - Easy installation by a qualified electrician
 - Made with the highest quality components in the industry, all of them
- Approved by the standard
- Mounting on standard DIN rail 35
- Mm External dimensions(mm)



The above data may be changed without prior notice

Technical data

	Working temperature range	-5°C÷60°C
	Screw type	terminal block connection type
		14÷22AWG, 0.5÷2.5mm ²
	stripping length	8mm
Frequency (Hz) 50/60Hz	tightening torque	0.5÷0.6Nm
	weight	Max. 160grams
	mounting Standard	Standard 35mm DIN Rail
	flammability rating	UL94V-0
	IP code (Terminals (20IP) protection class)	DC-13
	degree of pollution	2

A PCM must be obtained for the 10A-63A connection



Danger! Installation, service, and repair will only be performed by a trained and qualified technician. During installation, the power source must be disconnected. Opening the equipment may expose dangerous voltages. For any repair or service, return the device to the supplier. The manufacturer's warranty is limited to the quality of the material and the functionality of this product for two years from the date of shipment.

The warranty is valid in the event of a malfunction, provided that this product has been stored, cared for, installed, and operated under the conditions accepted for equipment of this type, and has not been

Any modification and/or attempt to repair the device by anyone other except the manufacturer. This manufacturer's warranty under this document is limited to the repair or replacement of a defective product, as per

The discretion of the manufacturer, in the manufacturer's factory